



# Apt 603 Millais House

Castle Quay

La Rue De L'Etau

St Helier

JE2 3ED

£595,000

FC215

SHARE TRANSFER - A stunning 2-bedroom, 2-bathroom apartment spanning 775 sq.ft. located on the waterfront in St. Helier. This prime location boasts a growing selection of restaurants, shops, and bars.

Designed for modern living, this purpose-built apartment offers bright and spacious accommodation throughout. The expansive open-plan living area features extra ceiling height and a fully fitted kitchen. Both the main bedroom suite and the lounge area open onto a generously sized, full-length balcony with partial marina views.

The second double bedroom comes with fitted wardrobes, and additional amenities include a house bathroom and a utility cupboard. The apartment also benefits from lift access to all floors, secure underground parking for one car, and a concierge service.







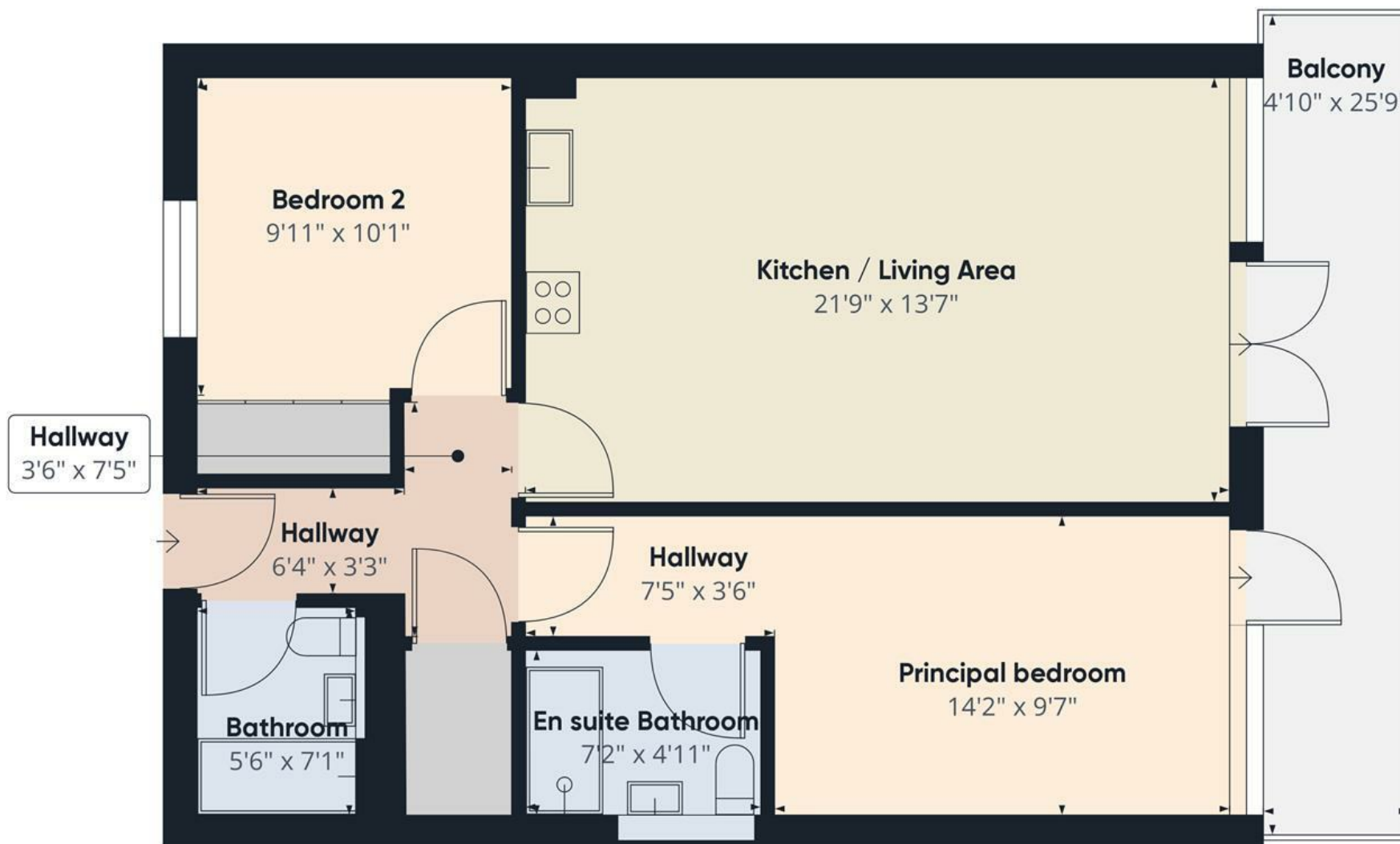












Approximate total area<sup>(1)</sup>  
742.82 ft<sup>2</sup>

(1) Excluding balconies and terraces

While every attempt has been made to ensure accuracy, all measurements are approximate, not to scale. This floor plan is for illustrative purposes only.

GIRAFFE360

**Outside**

Balcony with partial sea views.

Secure parking for 1 car.

**Services**

Electric heating.

Mains water and drains.

The service charges are £956.30 a quarter for the apartment and £61.12 for the parking.

**Directions**

Located in Millais House at the Waterfront.

**Call us on**

**01534 888855**

**[jersey@fineandcountry.com](mailto:jersey@fineandcountry.com)**

**[www.fineandcountry.je](http://www.fineandcountry.je)**

**5 King Street, St Helier, Jersey, JE2 4WF**

MONEY LAUNDERING REGULATION - Once an offer is accepted and negotiations for the purchase of a property are entered into, the prospective purchasers will be asked to produce photographic identification and proof of residency documentation, e.g. current utility bill and ID. This is in order for us to comply with the current Money Laundering Legislation.

Fine & Country Jersey advises prospective purchasers that we have prepared these sales particulars as a general guide only. We have not carried out a detailed survey, nor tested the services, appliances and specified fittings. Room sizes are approximate and rounded; they are taken between internal wall surfaces and therefore include cupboards/shelves etc, accordingly they should not be relied upon when purchasing fittings. Carpet, curtains/blinds and kitchen equipment, whether fitted or not, are deemed to be removable by the vendor unless specifically itemised within these particulars and/or within the property inventory. These particulars are supplied on the understanding that all negotiations are conducted through Fine & Country Jersey, their accuracy is not guaranteed nor do they form part of any contract.